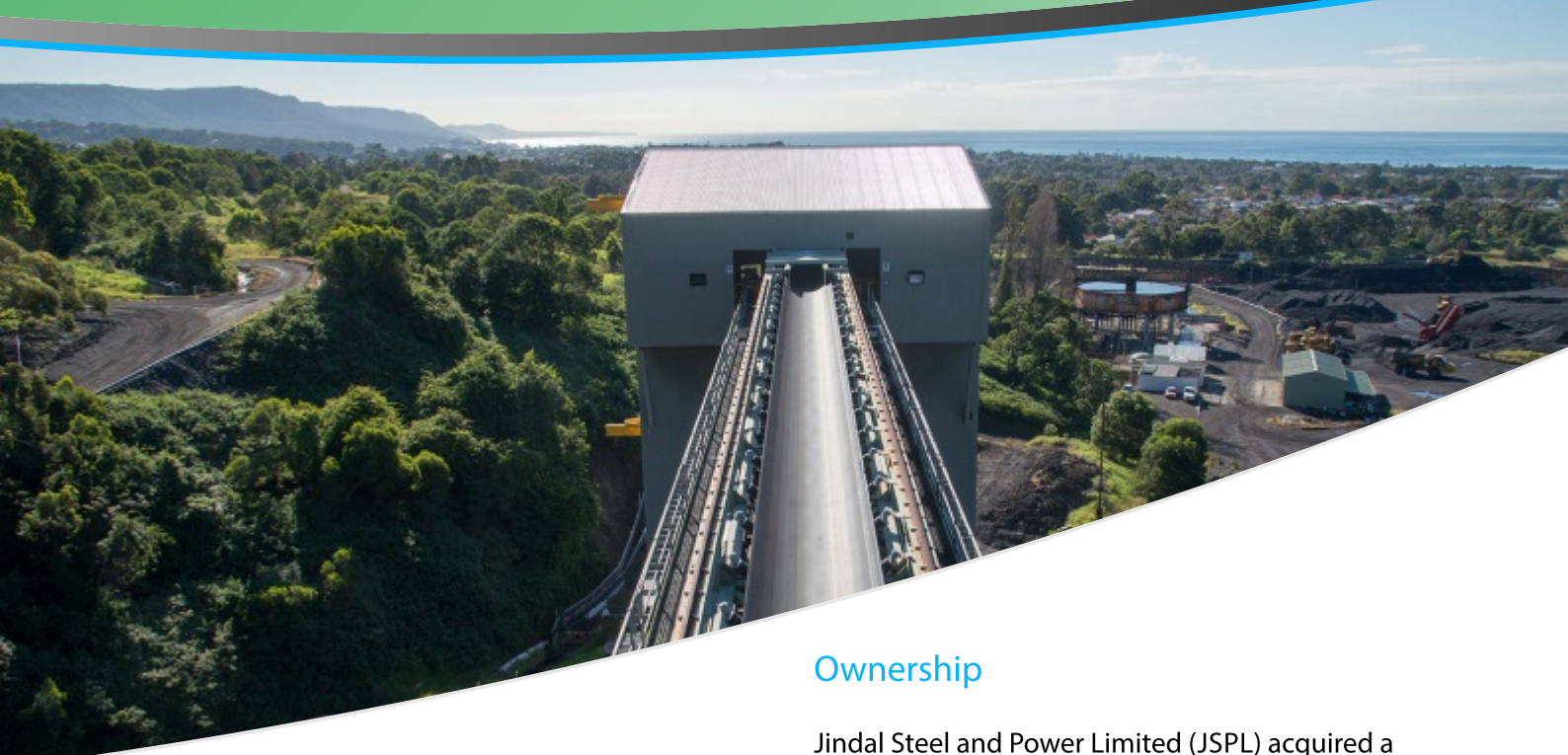


# Russell Vale Underground Expansion Project

PROJECT INFORMATION SHEET No.1  
MAY 2017



## This Information Sheet provides information on Wollongong Coal's Russell Vale Underground Expansion Project (UEP)

Wollongong Coal Limited (Wollongong Coal) is an Australian mining business which owns and operates Russell Vale Colliery. Originally known as South Bulli, Russell Vale Colliery is one of the oldest operating coal mines in Australia, with its origins dating back to 1887.

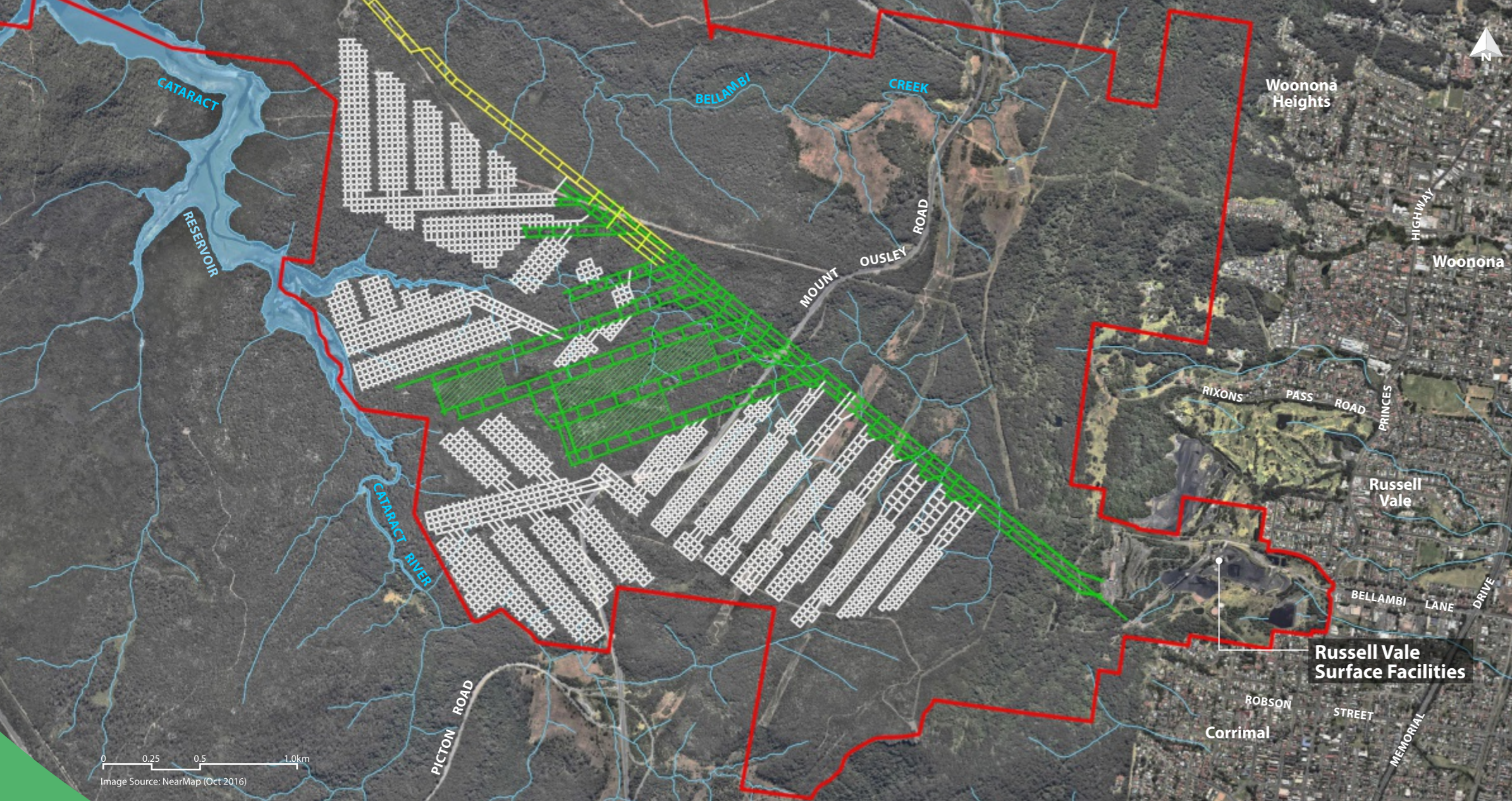
The Colliery is located approximately 10 kms north of Wollongong and approximately 60 kms south of Sydney. The mine has operated in three coal seams, the Bulli, Balgownie and Wongawilli seams. The Colliery is currently in care and maintenance.

## Ownership

Jindal Steel and Power Limited (JSPL) acquired a majority controlling stake and management control of Wollongong Coal from the previous owner Gujarat NRE Coking Coal Ltd. JSPL is listed on the Indian Stock Exchange and is an international steel and power company with operating steel capacity of about 10 million tonnes per annum (Mtpa) and power generation capacity is about 5000 megawatts. The majority of Wollongong Coal's production is sold on the export market.

## What is the Project?

The Underground Expansion Project (UEP) was originally lodged in 2009. Wollongong Coal have developed a revised mine plan for the Russell Vale UEP, in order to address issues raised by Government agencies, the community and the Planning Assessment Commission (PAC). The revised Project will utilise first workings mining methods which have been designed to be long-term stable and have negligible subsidence impacts.



**Figure 1** Russell Vale Colliery Key Features

**Legend**

- ▭ UEP Project Application Area
- ▭ Approved Mains Headings
- ▭ Proposed Wongawilli Seam Workings
- ▭ Existing Wongawilli Seam Workings

**What will be assessed?**

Comprehensive assessments will be undertaken to identify the potential environmental and social impacts of the Project and to identify how best to manage and/or enhance these impacts. This will include all potentially relevant environmental and community issues, with key focus areas including:

- Socio-economic;
- Subsidence;
- Air quality;
- Noise;
- Groundwater and surface water;
- Flora and fauna;
- Waste;
- Greenhouse gas; and
- Traffic.

It is understood that the report will then be placed on public exhibition, prior to assessment and determination.

**How is the revised UEP different from previous mine plans?**

The earlier mine plans for the UEP used longwall mining techniques which would have resulted in subsidence impacts. The revised mine plan (refer to **Figure 1**) addresses this issue, incorporating the use of non-caving first workings bord and pillar panels using standard continuous miners.

This in turn reduces groundwater impacts and avoids impacts to biodiversity, heritage and built infrastructure features on the surface above the workings, including the Cataract Reservoir.

The revised mine plan will provide for the extraction of approximately 4 million tonnes of run of mine (ROM) coal from the Wongawilli Seam at a production rate that would not exceed the previously approved ROM production rate of 1 million tonnes of coal per year.

This is significantly lower than the 3Mtpa ROM production originally contemplated in earlier Project applications. The lower production rate will also result in reduced impacts associated with surface operations including reduced trucking rates relative to previously proposed mine plans.



▲ Site ecological monitoring

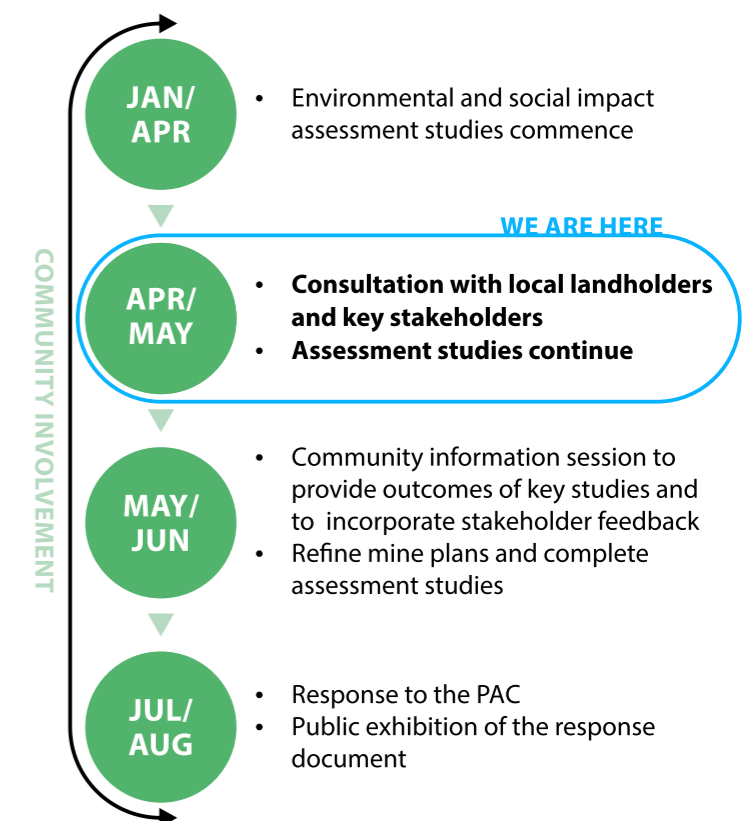
**What is the planning approval process?**

Wollongong Coal is currently preparing a comprehensive response to the PAC Second Review Report.

Umwelt (Australia) Pty Ltd (Umwelt), a specialist environmental and social impact consultancy, has been engaged to undertake the environmental and a social assessment and community consultation program for the revised Project.

This Response will include details regarding the revised project and a comprehensive assessment of environmental and social impacts of the revised mine plan.

An outline of the planning and approvals process is provided in **Figure 2**.



**Figure 2** Approvals Process Timeline

## How can I get involved?

Conceptual mine planning studies have had regard for the issues raised in relation to previous development proposals at Russell Vale Colliery. Further input from the community will be a valuable part of the Project to ensure that any community concerns are incorporated in Project planning, and considered in the assessments being undertaken on the revised Project plan.

As a priority, Umwelt will be proactively contacting landholders located in proximity to the existing operations to discuss the Project, document community issues and concerns and establish preferred communication channels through the assessment process. Further information will be provided as study findings become available.

A Community Information Session will also be held in mid June to provide an opportunity for the community to meet members of the Project team and discuss key outcomes of the Project studies. The community will also be able to make comments on the revised Project during the exhibition period.

Wollongong Coal will also be consulting with the local community and other stakeholders as part of the ongoing mine planning process for Russell Vale Colliery, and is committed to an ongoing presence in the local community.

We look forward to your involvement in the Project.

## Contact Information

If you would like to know more about the Project or be involved in the Social Impact Assessment or consultation program, please contact:

**Narelle Wolfe**  
Principal Social Consultant

e. [nwolfe@umwelt.com.au](mailto:nwolfe@umwelt.com.au)  
t. (02) 4950 5322  
m. 0409 786 585  
w. [www.umwelt.com.au](http://www.umwelt.com.au)

