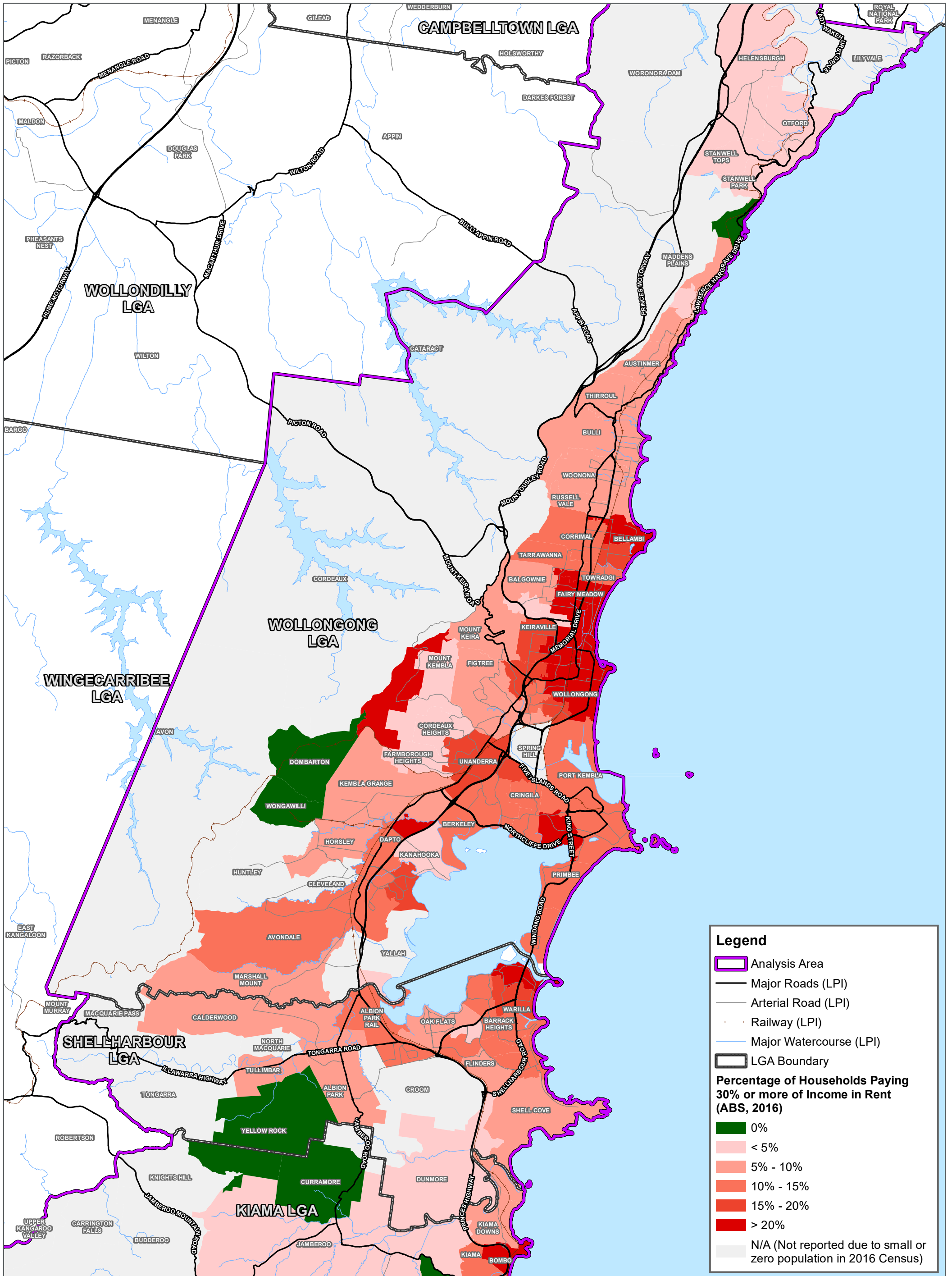


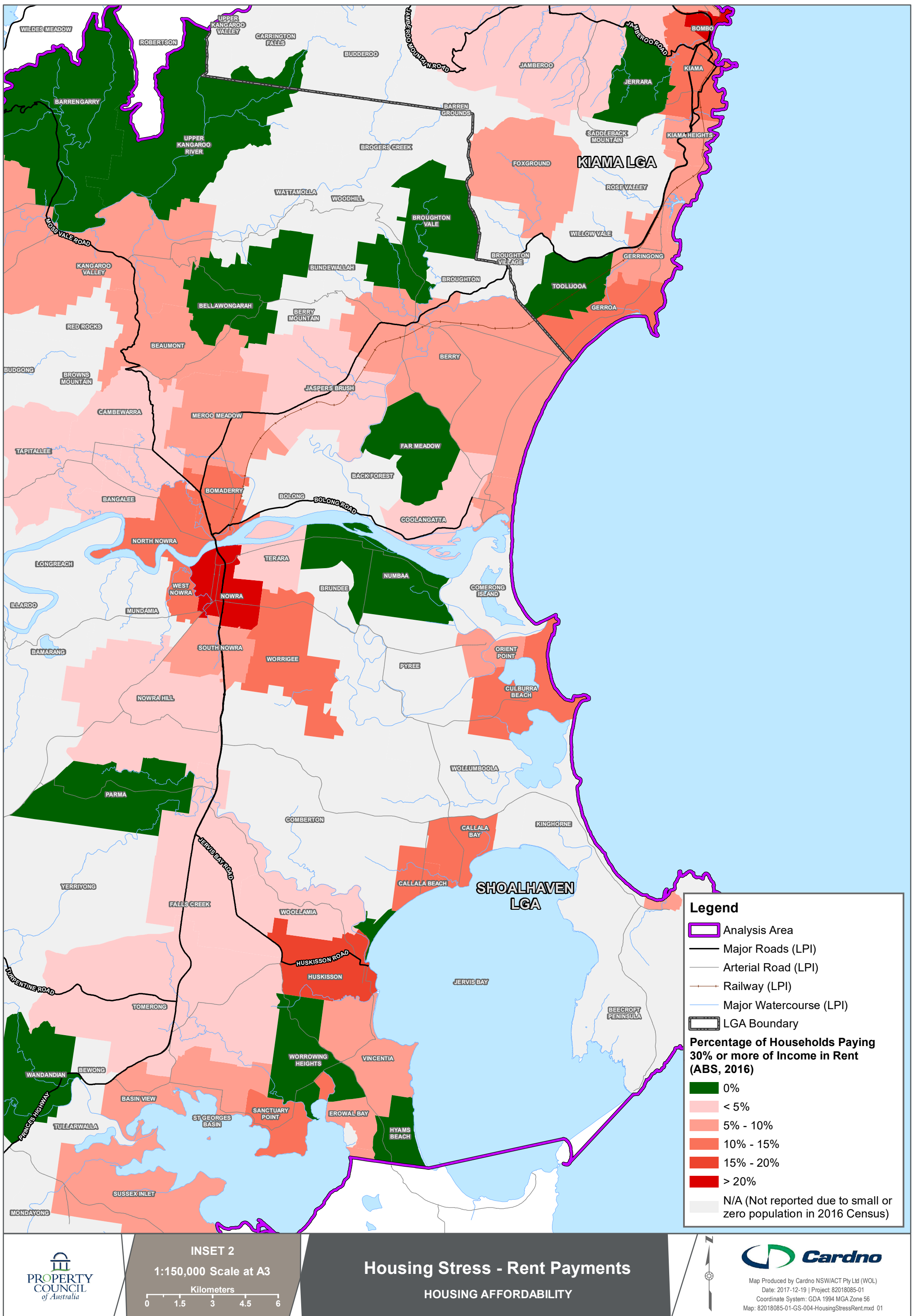
Legend

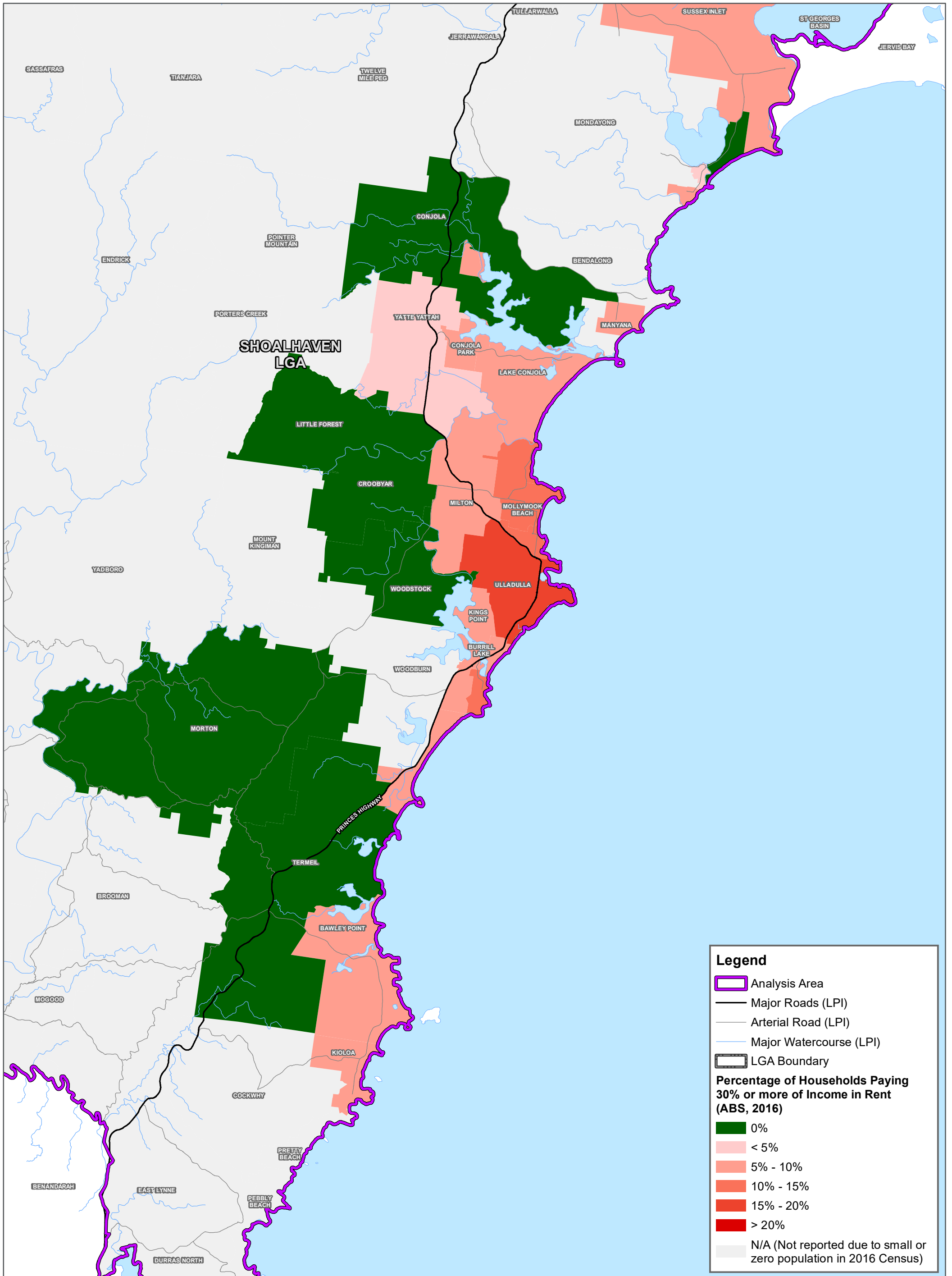
- Analysis Area
- Major Roads (LPI)
- Railway (LPI)
- Map Grid
- LGA Boundary

Percentage of Households Paying 30% or more of Income in Rent (ABS, 2016)

- 0%
- < 5%
- 5% - 10%
- 10% - 15%
- 15% - 20%
- > 20%
- N/A (Not reported due to small or zero population in 2016 Census)







Legend

- Analysis Area
- Major Roads (LPI)
- Arterial Road (LPI)
- Major Watercourse (LPI)
- LGA Boundary

Percentage of Households Paying 30% or more of Income in Rent (ABS, 2016)

- 0%
- < 5%
- 5% - 10%
- 10% - 15%
- 15% - 20%
- > 20%
- N/A (Not reported due to small or zero population in 2016 Census)