

**CMRI Christmas Fair 2013**

2WG AM 1152 | KhanSigns | WIN TELEVISION | MURRUMBIDGEE TURF CLUB | The Daily Advertiser | Charles Sturt University

**Festive family fun which supports a life saving cause**

**Blooming great gifts that will grow on you**

**More than 90**

WAGGA Forest Nursery will again be presteing a colourful selection of gifts that grow at this year's CMRI Christmas Fair.

The nursery has been supplying quality Australian native plants from tube stock to advanced size throughout Australia for more than 40 years.

They are committed to continue the supply of fresh forestry tubes, as well as general landscape and exotic plants

Also, as a result of the importance of water wise plants, Salvia has become a popular choice for landscapers and the home gardener alike.

Featured in many publications and television garden segments Salvia plants are gaining a well deserved reputation with a huge variety now available at specialist nurseries.



THE Wagga Wagga Committee of the Children's Medical Research Institute would like to welcome you to this year's two day 26th annual CMRI Christmas Fair at the Murrumbidgee Turf Club starting on Friday, October 25.

This year the Committee celebrated its 30th year of service to CMRI which has raised more than \$1,184 million.

As well as welcoming back many long time favourite stall holders; this year a large number of new "friends" will be at the fair.

Stacey Clayton is bringing her family business Koolamon Design to the fair for the first time. Koolamon Design produces a range of beautiful

silver jewellery which is hand stamped at Koolamon Station near Rutherglen. Their signature pendants are a popular choice for families celebrating the birth of a child or an anniversary.

Returning will be Wombats of Wagga with their great range of children's toys and books.

Catherine Castelain is again bringing her glorious range of French table cloths to the fair.

Quirky and Quaint is an original, handmade and Australian designed collection of children's decor that will excite and inspire you.

Judith Dowling will once again present her range of Dowling Country natural fibre shirts and jumpers and cardigans.

To brighten the centre of our fair will be a great range of plants, brought to us from Wagga Forest Nursery.

Deborah Emmett will again bring from Sydney her range of cotton and silk kaftans, together with a range of original block design and printed cotton table cloths; also a range of merino wool and silk scarves.

Under the name of Jewellery Botanical, Sandy Gadd will again bring her range of antique and vintage jewellery – which she has repaired, restored, resurrected and repolished.

Sarah Gordon will also have her range of jewellery design, specialising in sterling and fine silver.

■ To Page 41

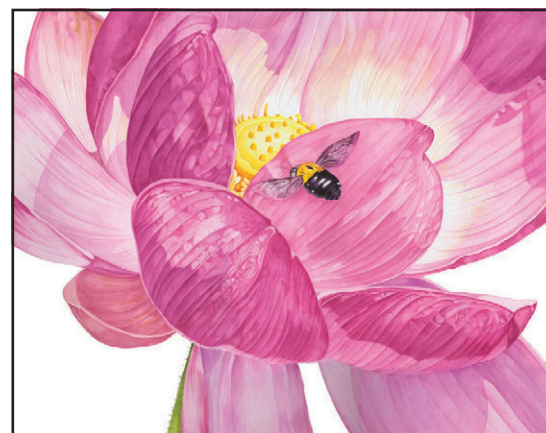
*Sarah Gordon* jewellery design

**Jewellery Design with a Touch of Whimsy**

Specialising in Fine Silver Hand Crafted Designs

- \* Fresh water Pearls
- \* Sterling Silver
- \* Created by Hand
- \* Modern Design with a Twist

[www.sarahgordon.com.au](http://www.sarahgordon.com.au) PH: 0418 213 418



**Narelle Thomas Botanical Artist**

Limited Edition Botanical Prints  
New Botanical Canvas Prints  
Botanical Gift Cards and Gift Sets  
Original Drawings

[www.narellethomas.com](http://www.narellethomas.com)

**About the CMRI Christmas Fair**

EARLIER this year the CMRI Wagga Wagga Committee celebrated its 30th year of service to The Children's Medical Research Institute.

In this time, they have had the pleasure of raising more than \$1,184 million towards unlocking the mysteries of childhood disease.

This year's fair is Wagga CMRI's 26th annual event.

As well as welcoming back many of their long-time favourite stall holders; this year they have a large number of new "friends" to welcome with a variety of items to delight their supporters.

This year, more than 90 stallholders from across Australia will be converging at the MTC for the anticipated two day event.

**Large Range of Native & Exotic Plants**

**Wagga Forest Nursery**

Ph. (02) 6931 2600  
Email: [wagganursery@bigpond.com](mailto:wagganursery@bigpond.com)

[www.wagganursery.com.au](http://www.wagganursery.com.au)

**2 duck trading company**

Bringing you wonderful French baskets & Homewares

Phone: **(02) 9380 2672**  
<http://www.2ducktrading.com.au/>

**Suzie Hope Designs**

**Suzie Hope Designs** - maker and designer of the original and **best quality** reversible padded **ironing board cover** for nearly 30 years.

Visit our online store to see our **range of colours and sizes**

[www.suziehopedesigns.com](http://www.suziehopedesigns.com) • Ph 02- 69423835

The **Wool Room** Country Store

- Merino Kids products
- Woolerina merino baby items
- Baby wraps and items.
- Adult merino wraps, shawls

**BUSINESS FOR SALE**

181 Boorowa St, Young NSW 2594 PH: 02 6382 6665  
[www.facebook.com/woolroom](http://www.facebook.com/woolroom) 0409 156 464

**TAMBEA JAM**

Jams, Preserves & Baked Goods  
Michele Moloney

[michele@tambeajam.com](mailto:michele@tambeajam.com) (02) 6924 6420  
[www.tambeajam.com](http://www.tambeajam.com)

# Christmas Fair 2013

# CMRI



## Artisan chocolates, gourmet food and more await stalls with gifts for all

**From Page 40**

New to the Fair this year is Your Inspiration at Home with a fabulous range of dips, dukkahs, oils and vinegars.

Need a new handbag? Ella Maiden is the stall to call past, designed and manufactured in Australia these are quality leather products with a wide range to choose from; handbags, back packs, luggage and fashion accessories.

With all the shopping to be enjoyed at the Fair, a must to carry all your purchases home will be a French market basket from 2 Duck Trading Company. Sourced from France and made of either date palm leaf or water hyacinth reeds. Also on the stall will be a range of French linen and espadrilles.

Michele Moloney will be at the fair with her wonderful range of specially created jams, pickles and preserved vegetables.

Little Things is a range of patchwork quilts from cots to

queen size beds. Traditionally made, these wonderful pieces will become a family heirloom.

200 roses will be at the fair this year brought to us by Harvest Country from Cootamundra, also daphne, and other plants along with a range of garden tools and gloves, doormats, ceramics, giftware, and Christmas bell wreaths.

Libby Pongrass will be back with her Love Libby range of bags, toilet bags, cosmetic purses, shower caps, and coin purses.

From Young, Kate Sevier is bringing The Wool Room Country Store with a wonderful range of Merino Kids baby items, clothing, and sleeping bags.

The Fair would not survive without Suzie Hope Design ironing board covers and laundry bags.

This year's Fair also welcomes back some favourite stall holders. Aussie Craft

Creations with their great clothing, Wollundry Grove olives, Greengrove Organics licorice, Natural soy Candles, Ollie and Max clothing, Yabba Gabba Kitchen and Blooming Marvellous, Jane Brown Pearls, Kingsman Collection and the Riverina Woodworkers and many more.

New to the Fair this year will be Anna Farley with a wonderful array of fresh flowers, Mooky with quality leather shoes for children and adults, Kim Gibbs' corrugated iron sculptures, and Divine Linen from Beechworth.

In the "Melbourne Cup" marquee this year will be Fabboo, ladies fashions and accessories, Page shoes and Wagga Wagga Milliners.

The Champagne Bar will be a bower of flowers where morning tea, lunch and afternoon tea will be served. The CMRI stall will have Christmas cards, playing cards, bridge scorers and tea towels.



Committee members Ali Wooldridge, Perri Harvey and Maureen Hoppe. with raffle prizes.



Committee members Genevieve Smith, Di Hutchings, Susan Duffy and Jane Lee.

**MURRUMBIDGEE TURF CLUB**

**THE MTC IS PROUD TO HOST THE CMRI FAIR**

Home of Two Top Function Centres

**PH: 69212151**

**For Details**

## CHRISTMAS FAIR

Presented by THE WAGGA WAGGA COMMITTEE OF THE Children's Medical Research Institute

Over 90 specialty stalls with Christmas gifts for everyone

**Friday October 25th 10am - 5.30pm**

**Saturday October 26th 9.30am - 4pm**

Murrumbidgee Turf Club (Wagga Wagga Racecourse)

**ENTRY**  
Adults \$5  
Children 14yrs and under free

EFTPOS facilities available onsite

**Lunch, morning and afternoon tea served in the Gazebo**

Find us on Facebook 'Wagga CMRI Christmas Fair'

[www.cmri.org.au](http://www.cmri.org.au)

Thank you to all our supporters including:

## WAGGA WAGGA PROSTATE CANCER SUPPORT GROUP

2nd Thursday of every month 7.00pm at Wagga Wagga RSL  
Cnr Kincaid & Dobbs Streets

# ALL WELCOME

For more information, please contact

• Kerry Geale 0437 590 938

• Mark Leonard 0417 480 529 • Bronwyn Inch 0409 445 587

