



**2 bay swing set** one x toddler seat, one x senior seats, two x inclusive boat seats with rubber under surfacing provides.



**Inclusive boat seats** provide physical support for children and adults with a range of disabilities.



**Accessible sandpit** with a graded transition entry provides opportunities for creative loose parts play.



**Riprap edge** large natural boulders 2 boulders high in some instances and one high in other are used to create level pods on the sloping site



**An orientation pathway** offers wayfinding and provides direction to users through the space at an accessible grade.

- Relocate picnic table
- Playground access
- Rocker
- Graduated balance challenge
- Accessible path of travel to sandpit
- Shade Structure
- Climbing equipment
- Stairs to sandpit
- Picnic table
- Shipping rope
- Park Benches
- Rubber
- Riprap planted edge
- 2 Bay swing set
- Riprap planted bank

STRAWBERRY TREE

NORFOLK ISLAND PINE

BUNYA PINE

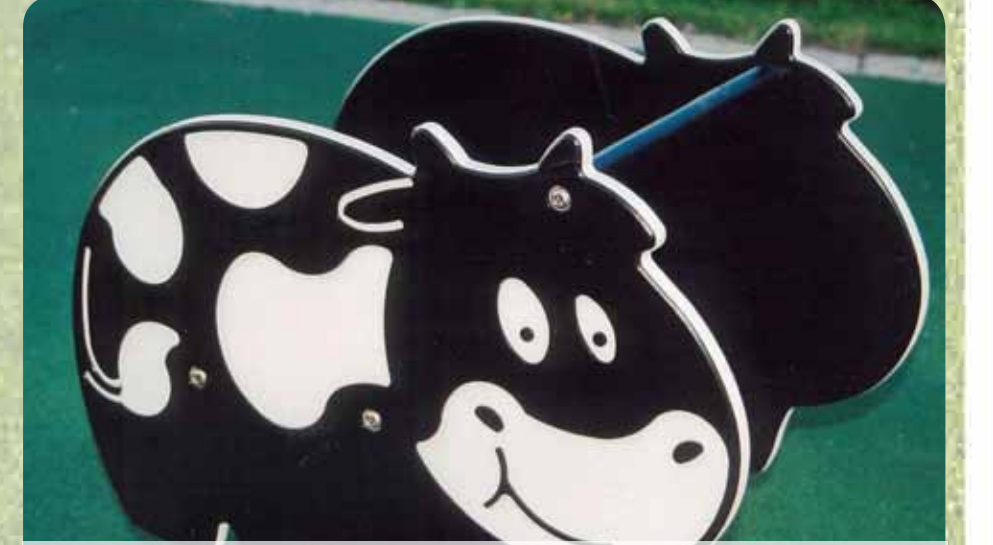
BUNYA PINE

STONE PINE

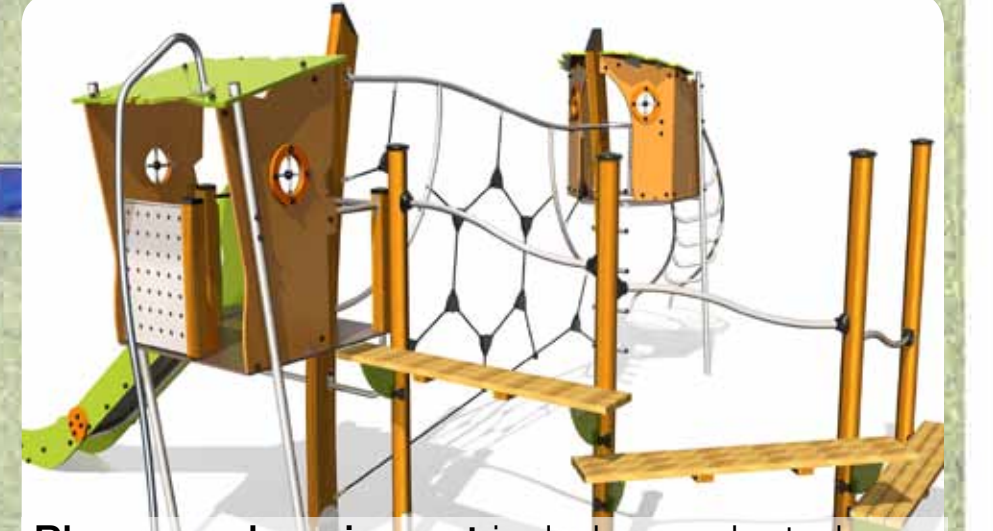
STONE PINE



**Relocate picnic table**



**Rocker** with back support, side panels, handrail and foot and ankle supports



**Playground equipment** includes graduated challenges encouraging children of different abilities to play together in one location.



**Graduated balancing challenge** that gets incrementally harder over its length. Grade one hardwood.



**Shipping ropes** can be static or dynamic and offer an easier and more accessible balance challenge with a highly textured and visual appearance.

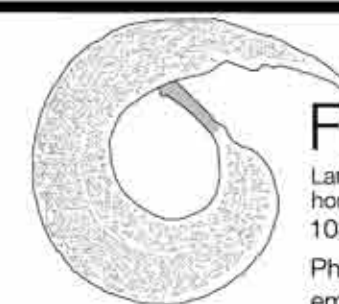
1:200 0 1 2 5 10 20  
at A1



PREPARED FOR:



# Bega Park Playground Concept plan 2



Fiona Robbé  
Landscape architecture,  
horticulture and play space design  
108 Arcadia Road Arcadia NSW 2159  
Phone: 9653 1045 Fax: 9653 1229  
email: fiona@architectsofarcadia.com.au

Scale: 1:200 at A1  
Job No: 1411  
Date: MARCH 2015  
Dwg No: CP-02