

SPECIAL FEATURE FROM THE NORTHERN DAILY LEADER



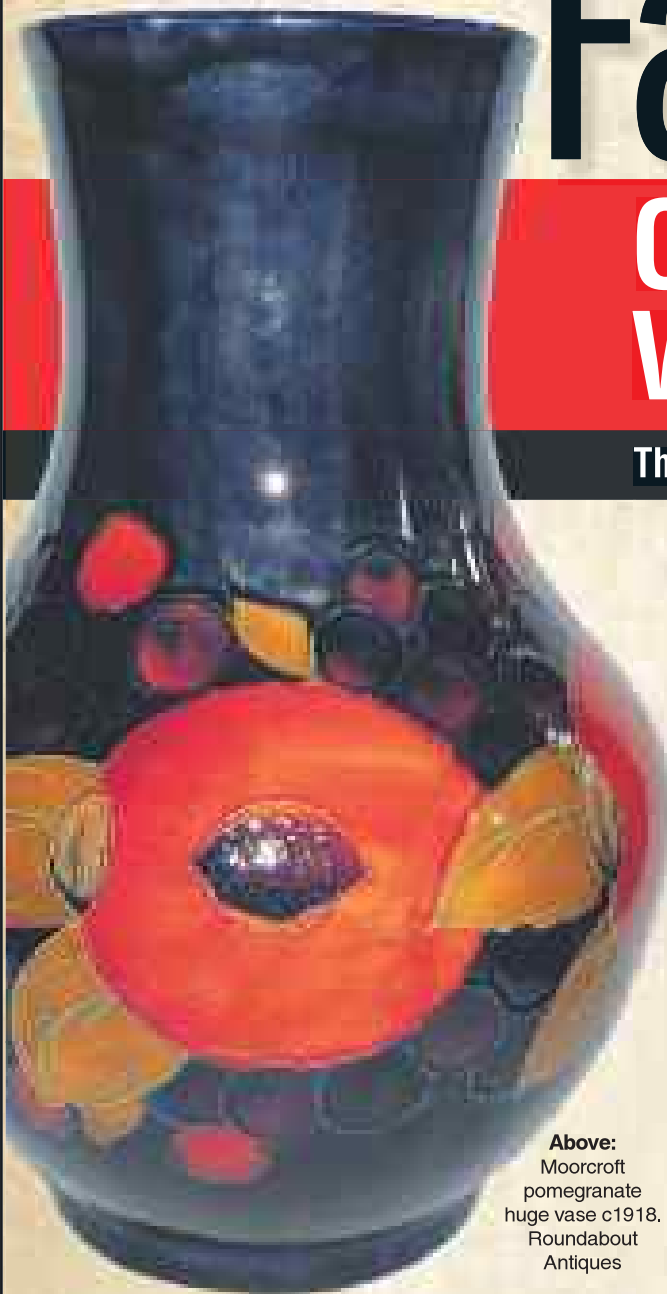
THE TAMWORTH 28th Annual Antique & Collectables Fair

YOUR CHANCE TO PURCHASE A PIECE OF HISTORY 2013

OPEN THIS WEEKEND

Friday: 2pm - 8.30pm
Saturday: 10am - 5pm
Sunday: 10am - 4pm

The Town Hall has wheelchair access plus is fully airconditioned for your comfort



Above: Moorcroft pomegranate huge vase c1918. Roundabout Antiques

THE Tamworth Town Hall's doors will open for the 28th Annual Tamworth Antique & Collectables Fair from 2pm this Friday with the official opening at 6pm by Australian show business personality Noeline Brown.

There are 25 exhibitors from NSW, Southern Queensland, Victoria, South Australia and Tasmania who will be showcasing a broad range of quality, historical pieces.

This year the fair welcomes two new dealers. Circa Collectables with art nouveau and art deco ware, and Leigh's Collectables, who have been sourcing beautiful Georgian, Victorian, art deco and collectable jewellery from all over the world since 2004.

In the past couple of years exquisite diamond and precious gemstone earrings, rings, bracelets, fobs, lockets and more stunning modern jewellery have been added to Leigh's collection and are well worth checking out during the fair.

Two dealers have returned after an absence, Eric and Lyn Miles and Grenik Antiques.

For collectors who have been seeking something a little different with identifiable European flair, Roundabout Antiques are promising some exceptional pieces of Rosenthal by the renowned artist Bjorn Wiinblad.

Again this year visitors can have precious items valued by making an appointment.

The cost \$5 and appointments can be made prior to the fair by calling

0438 663 058. The fair will be open over the weekend between 10am to 5pm Saturday and 10am to 4pm Sunday.

SHINING STAR: Noeline Brown will officially open the 28th Annual Tamworth Antique & Collectables Fair



18ct white gold emerald and diamond dragonfly. Leigh's Collectables.



Sponsored by The Northern Daily

LEADER PRIME 7

THIS FRIDAY, SATURDAY AND SUNDAY

Kinnear's Antiques

Brenton Kinnear

Early Australian colonial furniture & interiors

9 Railway Street, Toowoomba QLD

Brenton 0412 655 686

Email: kinnearsantique@bigpond.com

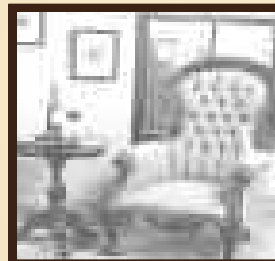
Web: www.kinnearsantique.com

AW1195644_AW1193189



JOHN WIGG ANTIQUES

Antique furniture & associated decorative items, museum pieces and old wares



BY APPOINTMENT

Wagga Wagga

Ph: 0428 693 181 or 0419 626 855
Email: johnwiggantiques@bigpond.com



The shop with beautiful things

- ◆ Australian colonial cedar and pine furniture
- ◆ Quality imported English furniture



Service is our by-word

Ballarat, Vic 3350

0408 659 249

woodshedantiques@bigpond.com

AW1195644

THE TAMWORTH 28th Annual 100% PRE-LOVED Antique & Collectables Fair



ENJOYING THE 2012 FAIR. Jayme Lay (12) and Laura Morris (12) both from Oxley High School and helpers at the fair, looking over some nice wares. Photo: **Barry Smith** 040812BSC03

ABOVE: A pine and cast iron campaign table. Circa 1880. Grange Antiques.



Noeline Brown

TV and stage icon to open Fair

NOELINE Brown has just celebrated her 50th year in show business. She started her professional career on stage in revue and music hall and enjoyed early success on television with the iconic *Mavis Bramston Show*, followed by the hit comedy series *My Name's McGooley, What's Yours?*

She also starred in *The Naked Vicar Show* on radio, stage and television, where she met her husband, writer/producer Tony Sattler.

A Logie winner, she has appeared in many television programs including *Would You Believe?*, *Daily at Dawn*, *Blankety Blanks* with Graham Kennedy, *Beauty and the Beast* and most recently the popular *Dancing with the Stars*, where, to her amazement, she and her partner Carmelo Pizzino made it all the way to the semi-finals. Noeline was playing for one of her

charities – Starting Points. She also walked away with \$125,000 for the same charity when she was the winner of a celebrity special of *Who Wants to be a Millionaire?* She also made \$50,000 for the Actors' Benevolent Fund of NSW, by winning Channel 7's *Celebrity Spelling Bee*.

Noeline's great love has always been the theatre and she is well known for her work in comedy and musicals.

For three years between 2003 and 2006 she toured in Peta Murray's charming two-hander, *Wallflowering*. She and her co-star Doug Scroope performed the play in 85 towns and cities around Australia.

In 2006 she also appeared in the film *Razzle Dazzle*.

In 2008 Noeline won the Norman Kessell award for her portrayal of Florence Foster Jenkins in *Glorious* at the Ensemble Theatre in Sydney.

In 2009 she starred in a two-hander called *Duets* at the Ensemble with her good friend Barry Creyton. She appears regularly on Richard Glover's *Thank God It's Friday* program on ABC radio and also on many comedy television programs including *Talkin' 'bout Your Generation* and *Spicks & Specks*.

In April 2008, Noeline was appointed Australia's first Ambassador for Ageing by the federal government and is currently enjoying that role. She has also been an Australia Day Ambassador for over a decade.

Noeline and her husband Tony Sattler have lived in the Southern Highlands of NSW for 36 years and they run their production company, Wintergreen, from home. Her autobiography, *Noeline – Longterm Memoir* was published in 2005 by Allen & Unwin and made the best-seller list.

Miles Antiques

Oriental glass, porcelain & collectables

Eric & Lyn Miles
St. Agnes SA, 5097
0414 603 945
E: emilesant@gmail.com

Diana B and Classic Plating

- China • Crystal • Silver
- Silverplate • Furniture • Jewellery

Anything interesting and preferably before 1950 and portable

Diana Brady & Paul Warren
0438 048 260
Melbourne, Vic
dianab3@bigpond.com

Olde Stuff

BUY - SELL
ANYTHING OLD AND UNUSUAL

Lamps, gramophones, telephones, clocks, nautical, anything interesting

Grant and Dyane Bloore
(07) 5594 1489
MOBILE: 0429 941 489

Selling from Antique Fairs in Queensland and N.S.W. and by Appointment

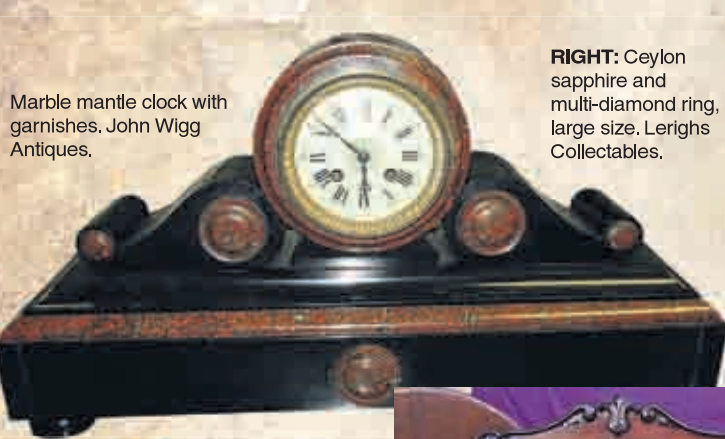
Grange Antiques & Collectables

AUSTRALIAN COLONIAL & ENGLISH GEORGIAN FURNITURE

AUSTRALIAN COLLECTABLES
Grange Antiques

95 GILBERT ST, LATROBE, TASMANIA 7307
Email: kevin@grangeantiques.com.au
Phone 0417 282 720

YOUR CHANCE TO PURCHASE A PIECE OF HISTORY 2013



Marble mantle clock with garnishes. John Wigg Antiques.

RIGHT: Ceylon sapphire and multi-diamond ring, large size. Lerighs Collectables.



ABOVE: French armoire circa 1770 from History Revealed.

LUCKY DOOR PRIZES



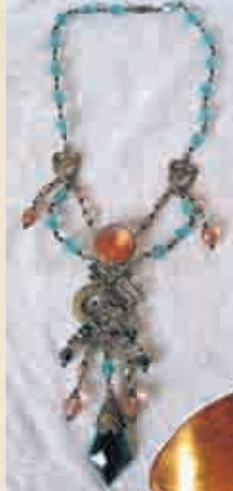
Retro lead crystal vase donated by Old Bar Curios.



Royal Doulton Flambe Sung mottled blue mushroom-shaped vase. Roundabout Antiques.



Colonial cedar chiffonier. Circa 1850 from History Revealed.



LEFT: Art deco Czech 1920s dragon necklace. Gold Coast Glitz.



Wedgewood plate donated by Forever Amber.



LEFT: Regency rosewood Canterbury. Superb, original condition. John Wigg Antiques.

RIGHT: Early Victorian walnut work box or games table. John Wigg Antiques.

VISITORS to the fair could win one of many wonderful items, with raffles and lucky door prizes on offer during the weekend event.

As well as Wedgewood, Royal Doulton and a 24 per cent lead crystal vase from the Slovak Republic, there will be a \$300 jewellery voucher and three \$50 jewellery vouchers.

Visitors could win a door prize just by attending the 2013 Antique & Collectables Fair.

The lucky door and raffle prizes will be drawn at 4pm on Sunday at the close of the weekend event, although the jewellery vouchers will be drawn throughout the weekend so winners can spend them. You don't have to be present to win these prizes.

forever amber

China, glassware, collectables, millinery blocks & accessories and items of small furniture.

Graham will be happy to assist and advise you with your selection using his wide experience in antiques and decorating.

By appointment
Ethan, Victoria, 3095
Phone: 0407 141 700
Email: mckernangraham@gmail.com

Just Imagine ANTIQUES

FINE CHINA, CRYSTAL, FIGURINES, SMALL FURNITURE, JEWELLERY

Diana & Thomas O'Dea

PO BOX 1137, Hunters Hill 2110
PH 0400 300 273
email: tvmdod@bigpond.com

ADMIRABLES Peter & Caroline Marr

Fabulous furs, crystal, cutlery, small furniture, jewellery, amber, silver contemporary and antique jewellery, boulder opal carvings, rings, earrings, necklaces, pendants, brooches and chains.



By appointment
PO Box 120 Double Bay NSW 1360
0427 102 370
e: admirables@iprimus.com.au

Gold Coast Glitz

Vintage costume jewellery



ph: 0412 451 871
e: worldvintagejewelry@gmail.com

Margot Edwina Rees-Parker Antiques

The Jewellery Specialists

Antique, estate & handmade reproduction jewellery, Russian Ottoman jewellery

Margot Rees-Parker
182 Rouse St, Tenterfield NSW 2372
margotreesantiques@netspace.net.au
Ph: 02 6736 1213
Fax: 02 6736 4545
Mobile: 0429 729 075

Pech Antiques

Exclusive range of English china and vintage costume jewellery

Debbie & Noel Pech

PO Box 110, Goroke VIC 3412

M: 0419 116 988

E: noeldeb@hotmail.com

THE TAMWORTH 28th Annual **Antique & Collectables Fair**

100%
PRE-
LOVED

Did you know?

Profit to the school

THE Antique & Collectables Fair is run by a voluntary committee of Oxley High School Parents' and Citizens' Association members and all profits will go directly to benefit the students of the school.

Have your heirloom valued

DO you want to know the value of a family heirloom? Appraisals are by appointment only during the Antique & Collectables Fair and cost \$5 for each item. Bookings are essential and can be made by calling 0438 663 058.

Dealers buying too

ALL the goods on display at this year's fair are for sale, however the dealers are also looking to buy quality items. If you have something you are interested in selling, bring it along – or for bigger pieces, a digital photo of the item – and talk to appropriate dealers. They are always on the lookout for quality pieces of history.

Exhibitors wouldn't miss it

MANY of the dealers attending this year's fair have been coming back to Tamworth for over 20 years. Three of the 25 exhibitors have displayed at every Antique and Collectables Fair since its humble beginnings in the Oxley High School hall in 1986.

Make a day of your visit to the Antique & Collectables Fair and enjoy the light meals, refreshments and freshly brewed coffee on sale throughout the fair.



LEFT: LaliqueDruide vase c1924. Shawbrook Antiques.



LEFT: Moorcroft Wetlands Emerald vase, limited edition of 100. c2013. Roundabout Antiques.



RIGHT: Doulton Burslem Corolean Ware. Blue and white roses c1898. Roundabout Antiques.



LEFT: Victorian 18ct gold pearl and diamond pendant brooch. Would have been worn by well-to-do ladies. Excellent condition and appearance. Leighs Collectables.



RIGHT: Large cedar twin pedestal partners desk with inlaid leather top. c1870. Woodshed Antiques.



ABOVE: Rosenthal Bjorn Wunblad Scheherazade with birds heavily gilt. Very tall vase. Roundabout Antiques.



ABOVE: Quality French pallsander and kingwood pedestal desk. c1880. Woodshed Antiques.

History Revealed

Colonial & Edwardian cedar & pine furniture & collectables

Ph: 0420 919 904

Layne Johnston & Michael van der Valk

Email: layne.johnston@gmail.com

OLD BAR CURIOS and ANTIQUES

Buying and Selling

Interesting variety of collectables and military medals



0417 020 090

By appointment



Email: herman5@bigpond.com

CIRCA COLLECTABLES



Art nouveau & art deco metalware & bronzes, mid 20th C. furniture & decorative items, clocks, lights, glass & ceramics, designer jewellery, Spode 19th C. blue & white pottery

RUSSELL & SANDY BROOKS
Wahroonga 2076 | 0414 489 784
Email: rjbrooks@bigpond.net.au

China Bound Pty Ltd

Restored western & Chinese furniture, jade, ivory, clocks, porcelain & netsukes

Phone (03) 9369 2306
0414 248 120

72 Tatman Dr, Altona Meadows, Vic

Mooney's Collectables

20th Century China, bears, dolls, advertising signs and Australian pottery

BY APPOINTMENT

PO Box 163, Port Macquarie

0407 945 951 - 02 6584 0249

munijoy1@yahoo.com.au



Antique and new jewellery

Leigh Enever
P.O. Box 801, Albury 2640 • 0419 149 743
Email: l.se@bigpond.com

YOUR CHANCE TO PURCHASE A PIECE OF HISTORY 2013

OPEN THIS WEEKEND

Friday: 2pm - 8.30pm

Saturday: 10am - 5pm

Sunday: 10am - 4pm



LEFT: Royal Doulton early motoring tankard. Aleta's Antiques.



RIGHT: Royal Doulton Blue Poppies, Jardiniere regent shape. Roundabout Antiques.

BELOW: Burr walnut inlaid loo table with 4 matching chairs of the same era. John Wigg Antiques.



Early Victorian rosewood davenport, c1840. Woodshed Antiques.



LEFT: English mahogany secretaire bookcase, c1850. Woodshed Antiques.



Wine table. Kinnears Antiques.



Georgian mahogany secretaire chest with fitted internals and resting on outswept bracket feet. Grange Antiques.



Rare pair mahogany Georgian knife boxes, c1790. Closed, left, and open, right. Grange Antiques.



Sponsored by
The Northern Daily
LEADER
PRIME 7

Albion Antiques

Good quality Victorian, Edwardian furniture, bric-a-brac & antique jewellery

Valentina & Bill Trindall
P: 07 3256 0744 or 0408 736 042
E: albionantiques@gmail.com

ROUNABOUT ANTIQUES

Most extensive range of premium quality china including Royal Doulton, Moorcroft, Carltonware, Beswick, Lladro, Mary Gregory glass, Cranberry Glass & John Deacon's (Scotland) homemade glass.

Specialising in Royal Doulton.

106 Campbell St, Toowoomba Qld 4350
PH: 07 4632 8805 or 0417 714 105
Email: sales@roundaboutantiques.com.au

SHAWBROOK ANTIQUES

Georgian Thru Edwardian furniture, ceramics, glass, silver & other metalware

ph 0418 574 570
e shawbrookantiques@gmail.com

Aleta's Antiques

Specialising in 18th - 20th Century ceramics, glass, Asian furniture, Asian art, European and American studio glass and art glass, noteworthy object de virtue, other decorative arts and accessories.

TALLONG NSW
0411 559 064 | Email: tallongcon@bigpond.com

Mainly Chintz

Specialising in Royal Winton, Royal Albert, Royal Doulton and other English fine china

Roy & June Craswell
Brisbane Qld

• 0415 055 481 •
Email: crusty777@bigpond.com

GRENİK ANTIQUES

Quality antiques, majolica, boxes, some marine

NICK CROTHERS 0419 105 732
Bicheno, Tas. 7215
email: rexcrothers@hotmail.com