

# FUTURE LOOKS BRIGHT FOR BLACK TRUCK & AG AS NEW ERA BEGINS



**John Marshall**  
Sales Consultant



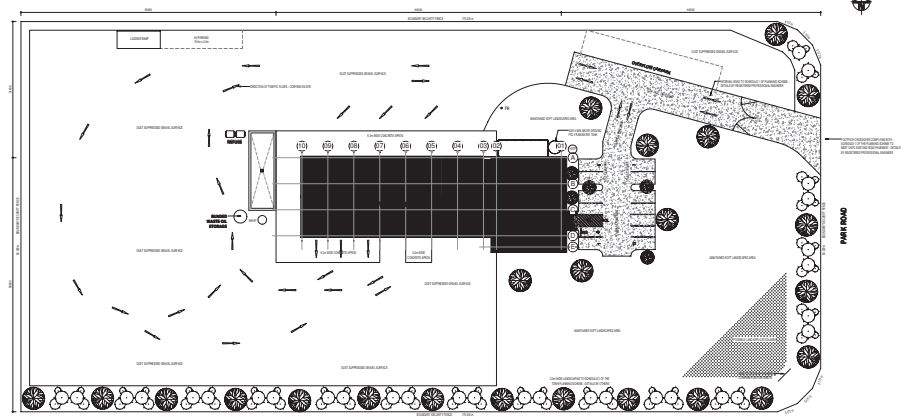
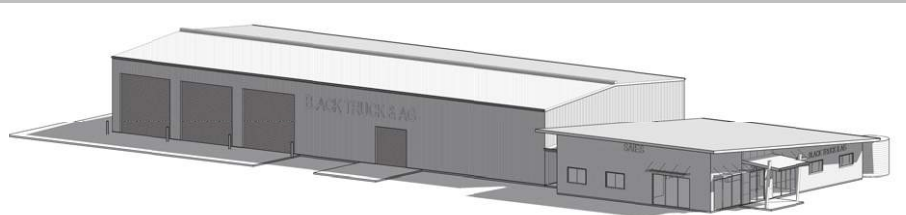
**Leon Wise**  
Aftersales Support

Black Truck & Ag is celebrating ten and a half years in Moree and are still going strong. The Harvey Black Group purchased Moree Header Sales and Service in 2004, and whilst we have seen some tough years, we are more committed now than ever to the region and Australian agriculture. Since the purchase in 2004, Black Truck & Ag has opened branches in Goondiwindi, Dalby and Roma, and we see a strong future for agriculture in both cropping and beef.

The appointment of Michael Watt as Branch Manager at the Moree dealership in September 2013 has been a positive move for the business. Michael has been the branch manager at Goondiwindi for 3 and a half years and he intends to continue to do both roles (he has worked for the group for over 10 years now). "It's a big job" Michael Watt said, "But it's one I am up for. My theory is that you surround yourself with good people and my job becomes much easier".

Moree has just appointed John Marshall as a sales consultant. John is a Moree local and has worked in the industry for over 17 years. John brings extensive knowledge on all aspects of the industry and we look forward to John being a part of our growth for years to come. Leon Wise has also joined our team. Leon comes from a service background and fulfils a new role in the company between the Goondiwindi and Moree branches as after sales and service support. This role is an important one for our business moving forward.

Both Moree and Goondiwindi branches take pride in supporting local growth and employment. Moving forward both branches plan to work closer together to supply a better support for our customers.



## NEW GOONDIWINDI SITE (CUNNINGHAM HIGHWAY)

We do support local charities and events, as we understand how difficult in current climate and downturns it can be to keep local charities, functions, sporting events and even local school floats.

Some exciting news: We have just purchased land on the Goondiwindi bypass road (Cunningham Highway) and in the next few months we will see some land forming, and fill work will start to take place. This is an exciting time for the group and will also be a great advantage to our customer as we cement ourselves in Goondiwindi as being here to stay. "Our branch in Goondiwindi has had quite a growth spurt over the past couple of years," Jason Black said. "We have expanded it from three employees to over 11 currently."

"We now have over 15 mechanics between Moree and Goondiwindi servicing northern NSW and Southern QLD. This will enable us to offer a better quality of work as we will be able to draw on those with the best expertise from either branch."

"We have good levels of stock of AGCO track machines and New Holland wheel tractors and are able to offer some great deals at the moment with good help from the manufacturers."

"In summary, we have never been more committed to providing great service to our customers, and we look forward to another 10 years servicing the greater Moree region."

AW1491155

# Challenger

**Less compaction, less fuel,  
less stress and  
for a limited time  
LESS MONEY**

**MT765D \$245,000 + GST (no trade only) 2 ONLY AVAILABLE**  
**MT865C TPL & PTO \$390,000 + gst (no trade only)**  
**Deals also available on MT845C & MT855C**

## Considering a high HP wheeled tractor?

It's time to look at challenger. The advantages of a track machine, legendary reliability and efficiency built on more than 25 years experience in Australia.

**Black Truck & Ag MOREE are offering 1/2 price travel for all field service work carried out in October to celebrate 10 years in Moree!**

Get an unprecedented deal on Challenger MT700D and MT800C Series tracked machines. Call Black Truck & Ag today.

**BLACK TRUCK & AG**

NEWELL HIGHWAY, MOREE  
PH (02) 6752 2277

**Smart Machines.  
Serious Results.**

*Challenger*

AW1489727